

**Whitehaven Vickery Extension Project
Community Consultative Committee**

Date: 3 August 2023, 12 pm – 12:45pm

Location: Whitehaven Gunnedah Office Boardroom and Zoom

Attendees	
Community Members Keith Blanch (KB) Community Representative Grant McIlveen (GM) Community Representative Cr Colleen Fuller (CF) - Gunnedah Shire Council Gunnedah Shire Council Wade Hudson (WH) - Gunnedah Shire Council Bhavika Khot (BK) – Gunnedah Shire Council	Whitehaven Coal Megan Martin (MM) Whitehaven Coal Jabin De Keizer (JDK) Whitehaven Coal Darren Swain (DS) Whitehaven Coal Mark Stevens (MS) Whitehaven Coal Independent Chairperson Professor Roberta Ryan (RR) Minute taker Isa Crossland Stone (ICS)
Apologies Ron Fuller (RF) Community Representative Barry Thompson (BT) – Community Representative Donna Ausling (DA) - Narrabri Shire Council Michelle Henry (MH) - Narrabri Shire Council Cr Cathy Redding (CR) - Narrabri Shire Council Cr Darrell Tiemens (DT) - Narrabri Shire Council Cr Rob Hooke (RH) – Gunnedah Shire Council	

Item	Description	Action
1	Welcome and introductions	
	<p>RR introduces herself as chair of the CCC</p> <p>RR welcomes the attendees to the Whitehaven Vickery Extension Project CCC meeting.</p> <p>MM introduces herself; she is the Environmental Superintendent for Whitehaven and the Vickery project. superintendent for Whitehaven – including Vickery extension project.</p> <p>DS introduces himself; he is the General Manager Community Engagement for Whitehaven.</p> <p>JDK introduces himself; he is Community Relations Manager for Whitehaven.</p> <p>MS introduces himself; he is the Executive General Manager - Project Delivery at Whitehaven.</p> <p>CF introduces herself; she is the alternate delegate from Gunnedah Shire Council and is attending in the absence of RF who is an apology.</p> <p>GM introduces himself; he is a community representative.</p> <p>KB introduces himself; he is a community representative.</p> <p>WH introduces himself; he is from Gunnedah Shire Council.</p> <p>WH introduces BK to the group. She is a new town planner at Gunnedah Shire Council.</p>	
2	Confirmation of previous minutes	
	GM and KB confirm the previous minutes as an accurate reflection of the meeting.	
3	Declaration and Interests - RR	
	<p>RR asks for any conflicts of interest, pecuniary or no pecuniary, to be declared either in this meeting or offline.</p> <p>No declarations are made.</p>	
4	Introductions to the new Vickery team	
	<p>DS introduces the new Whitehaven attendees formally to the group.</p> <p>DS introduces JDK; he joined Whitehaven last week as the Community Relations Manager and will be working with the Vickery project team. He will attend these meetings regularly.</p>	

	<p>DS introduces MM; she is the environmental superintendent for the Vickery project on the Operations team.</p> <p>DS says that the Operations team will increasingly be part of this group, as the mine gets up and running.</p>	
4	Actions arising from previous minutes - RR	
	<p>SM to update the CCC on Whitehaven's plans to develop an alternate route on Braymont Road.</p> <p>In SM's absence, DS answers on behalf of Whitehaven. He says that there is no final decision on this matter. He will report back at the next meeting.</p> <p>RR notes that DA was going to present on Narrabri Council's zoning plans but is an apology. This presentation will be carried over to the next meeting.</p> <p>DS notes that Whitehaven has been working with the Gunnedah Council on DAs for developing some houses in Gunnedah and are also working with Narrabri Shire.</p> <p>Regarding road access in the closure of a section of the Braymont Road that usually gives access to the TSR, WH confirms that the Council has received an application for that road closure.</p> <p>WH says that the infrastructure team has indicated that the access from the North is deemed to be acceptable in accordance with the relevant standard. This means that there will be no requirement for an access road from the South to the TSR in question.</p> <p>KB asked about the details of this access to the TSR from Braymont Road.</p> <p>WH says that Whitehaven was looking at creating a carriageway to allow easier stock travel during the road closure.</p> <p>DS says that they are still planning to provide this access.</p> <p>GM says that this is correct. There is access to drive there, and the way will be fenced and gated.</p>	<p>DS to report to the CCC on Whitehaven's plans to develop an alternate route on Braymont Road.</p> <p>DA to present on Narrabri Council's zoning plans (carried over from the last meeting).</p>
5	Canyon and Vickery Environmental Report - MM	
	<p>MM shares a presentation on the Canyon and Vickery Environmental report.</p> <p>MM's presentation is part of Whitehaven's larger</p>	

	<p>presentation, which will be attached to the minutes in PDF format.</p> <p>The presentation refers to TSS, which MM explains is 'total suspended solids' or turbidity.</p> <p>MM explains that a 'TEOM' is a dust monitoring unit. It only allows certain particle sizes through and 'weighs' the mass to give a measurement of the dust in the air.</p> <p>DS discusses the feedback from the Social Impact Assessment which is now required to be updated. He says that Whitehaven is finalising feedback from stakeholders, and it will then be provided to DPE.</p> <p>KB asks about the detour dust meter which site just off Braymont Road. This is a very busy road currently.</p> <p>Regarding the bushfire management plan which has been approved, KB asks if there will be any risk prevention methods applied on the boundaries between the fuel farm and surrounding properties.</p> <p>MM says that she is not intimately acquainted with the strategies involved in the bushfire management plan, but she says that the plan will contain these details. She is happy to follow this up and provide more details at the next CCC meeting.</p> <p>GM asks about the two sites where noise meters are intended to be placed.</p> <p>MM indicates the general two locations on a map. They are both located in the South; one is near the river, and the other is near the highway.</p>	<p>The management plan can be found on Whitehaven website under Environmental Management Plans https://whitehavencoal.com.au/our-business/our-assets/vickery-extension-project/</p> <p>MM is to provide a brief summary of the fire management strategies contained in the Bushfire management plan at the next CCC meeting.</p>
--	---	--

6	Project Update - MS	
	<p>MS shares the key project updates. MS' presentation is attached to the minutes.</p> <p>RR thanked MS for his presentation. She asks the group to share any questions on early mining. There are none.</p>	
7	Community Update - DS	
	<p>DS' presentation will be attached to the minutes in PDF format.</p> <p>GM asks whether Narrabri has received its funding of \$3.2 million, as outlined in DS' presentation.</p> <p>DS says that they have.</p>	

	<p>GM says that Narrabri Shire Council committed approximately \$800,000 to an aged care facility in Boggabri.</p> <p>It seems that this donation has not been followed through. This is concerning, as the Boggabri community has been impacted significantly by mining projects, wherein property rates have increased significantly.</p> <p>DS explains that Whitehaven's Environmental Impact statement (EIS) proposed a number of projects to which the Narrabri Shire Council might allocate some funding. This project approval was provided.</p> <p>DS explains that if within a 6-month period, the Council had not agreed to these proposed projects, the Council received this amount (\$3.2 million) even though the proposed projects may not be carried forward.</p> <p>DS has heard that as part of their project approvals, Boggabri Coal is required to build several houses. In place of this commitment, DS believes that Boggabri Coal has committed to funding the development of Glentarkie Aged Care home.</p> <p>RR will follow this up with Narrabri Shire Council.</p>	<p>RR to follow up with Narrabri Council regarding their previous commitment of \$800,000 to the Glentarkie aged care home.</p>
	Next Steps – MS	
	<p>MS says that when the EPL comes into place, there will be a lot more visible activity on the mine.</p> <p>They have recently had the EBA agreement signed off on by the Fair Work Commission. There are still many jobs to be filled for the Vickey Extension project.</p> <p>GM asks MS if the mining is still due to begin in October.</p> <p>MS says yes. There is still one point of the EPL to be signed off on. Following this, there will be a few months to construct the water management system. He says that mining should begin either in late October or early November.</p>	
	General Business - RR	
	<p>RR invites attendees to ask any questions or share comments.</p> <p>CF thanks Whitehaven for its provision of grant funding. She says that it has benefitted many specific organisations across the region that would otherwise not have received</p>	

	such support. As a result, she says that it has benefitted the community broadly.	
	Next Meeting - RR	
	<p>RR asked the group for suggestions about meeting timing.</p> <p>MS suggests the first week of November, as there will be more to report on when mining works have begun.</p> <p>RR suggests Thursday, November 9. The group is agreeable.</p> <p>ICS will send a calendar hold.</p> <p>RR thanks the attendees for their presence at the meeting. She wishes them well.</p>	<p>ICS to schedule the next CCC meeting for Thursday, November 9 at 12pm.</p>

Vickery Coal Mine

Community Consultative Committee Meeting

3 August 2023



WHITEHAVEN COAL

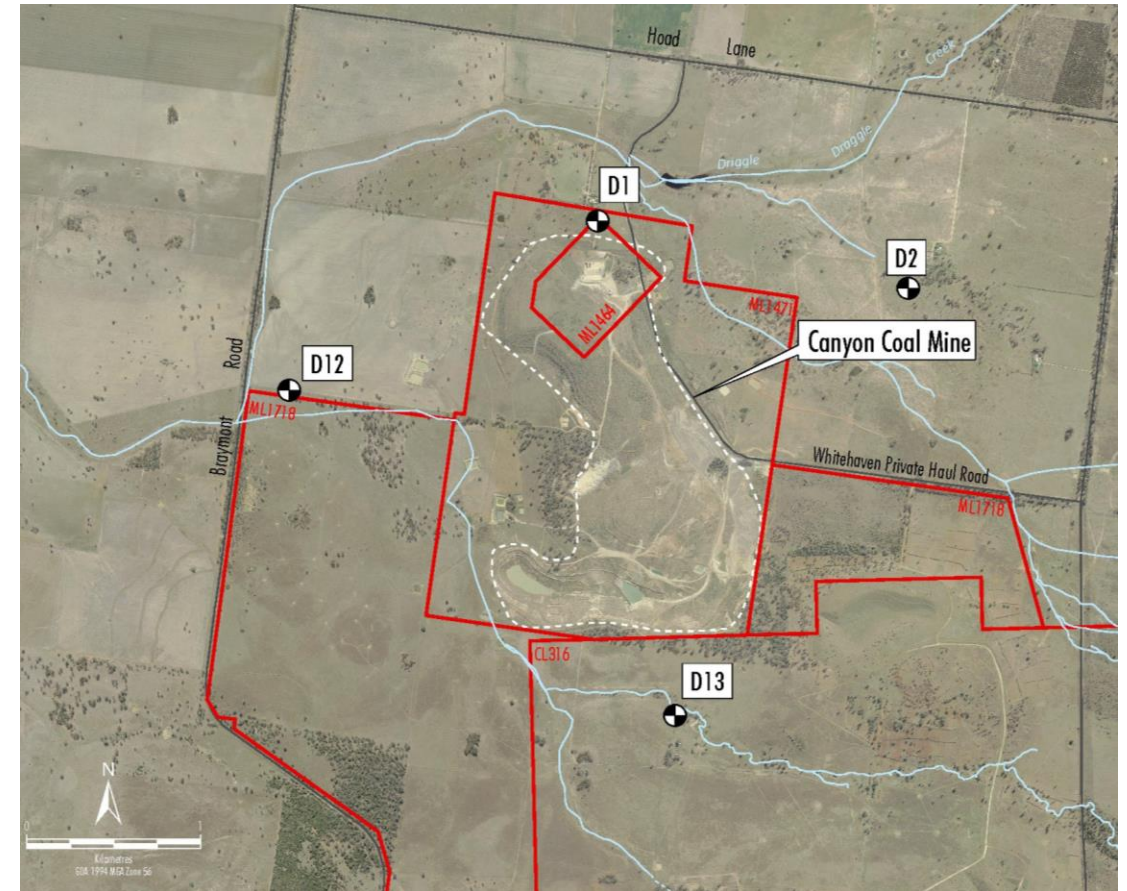
Canyon - Air Quality

Depositional Dust Monitoring – Background and Performance Monitoring

Depositional Dust (12-month insoluble matter results in g/m2/month)	
Site	Annual Average
D1	0.68
D2	0.59
D12	1.59
D13	0.34

Dust emissions are not a result of the development.

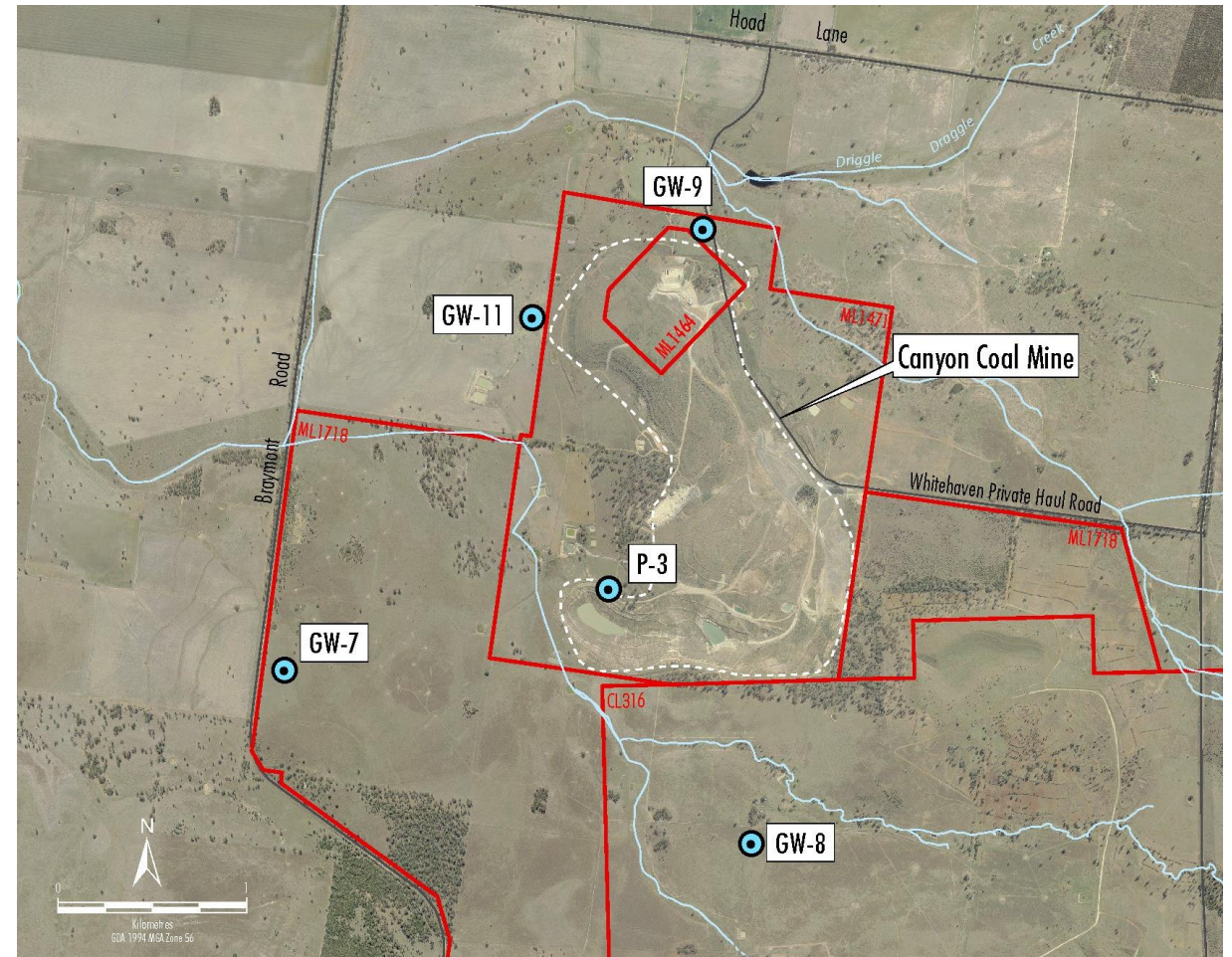
- D12 results affected by bird droppings accumulating in the gauge and adjacent farming activity.
- Data is for information purposes. Dust depositional gauge monitoring will be replaced by monitoring under the VEP Air Quality and Greenhouse Gas Management Plan



Canyon - Groundwater

Background and Performance Monitoring

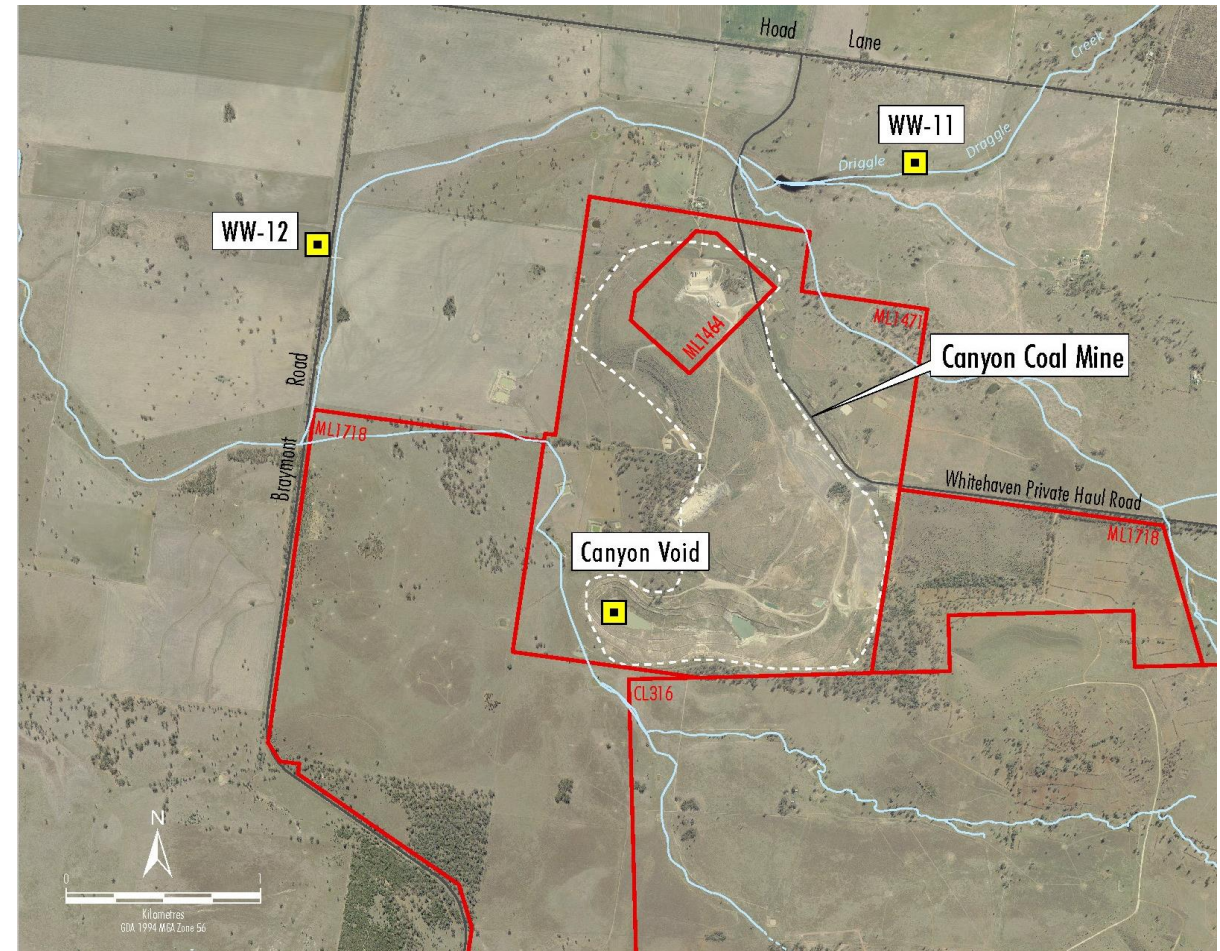
- All sites standing water level monitored approximately every 6 months.
- Sites GW-11 and P-3 have water quality assessed every six months to review temporal trends.
- Groundwater levels have generally remained consistent, except for an increase in level at GW-8, but remains consistent with long-term trends at that site.
- EC and pH were consistent with temporal trends at all sites except P-3 where EC decreased. No oil or grease have been identified in monitoring bores or were below the limit of reporting (<5 mg/L).



Canyon - Surface Water

Background and Performance Monitoring

- On average, the site received 809.8 mm of rain on the last 12 months. The highest rainfall was in September 2022 with 153.4 mm at the site weather station.
- Surface water monitoring undertaken on 7 occasions. Water pH and EC were within ANZG trigger values for ecosystems. TSS varied from approximately 20 to 200mg/L relative to flow.
- Canyon Void water levels and quality are monitored on a 6 monthly basis. Water level and quality is generally consistent since the last CCC meeting.
- Results are for information purposes. Merging of monitoring with Vickery will occur as part of the Vickery Extension Project Water Management Plan.



Complaints


No complaints received


<https://whitehavencoal.com.au/our-business/our-assets/canyon-mine/>

Contacts

Canyon Mine

Contact us via our community hotline or email for more information, to provide feedback or to lodge a complaint.

 1800 WHAVEN (1800 942 836)

 CANYONPROJECT@WHITEHAVENCOAL.COM.AU

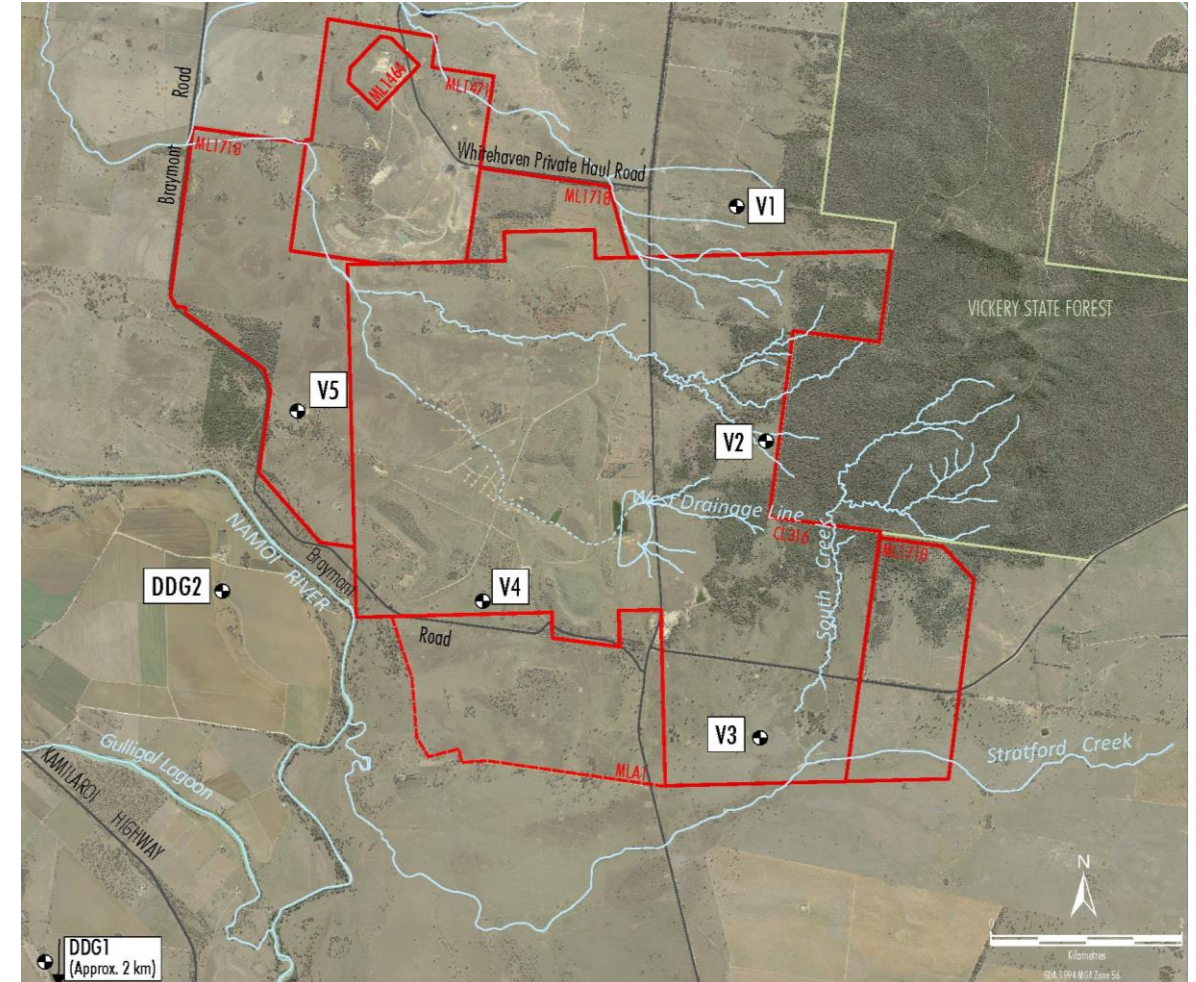
Vickery - Air Quality

Depositional Dust monitoring - performance and background monitoring

Depositional Dust (12-month insoluble matter results in g/m2/month)	
Site	Annual Average
DG1	0.89
DG2	0.62
V1	0.54
V2	5.14
V3	2.08
V4	0.87
V5	0.85

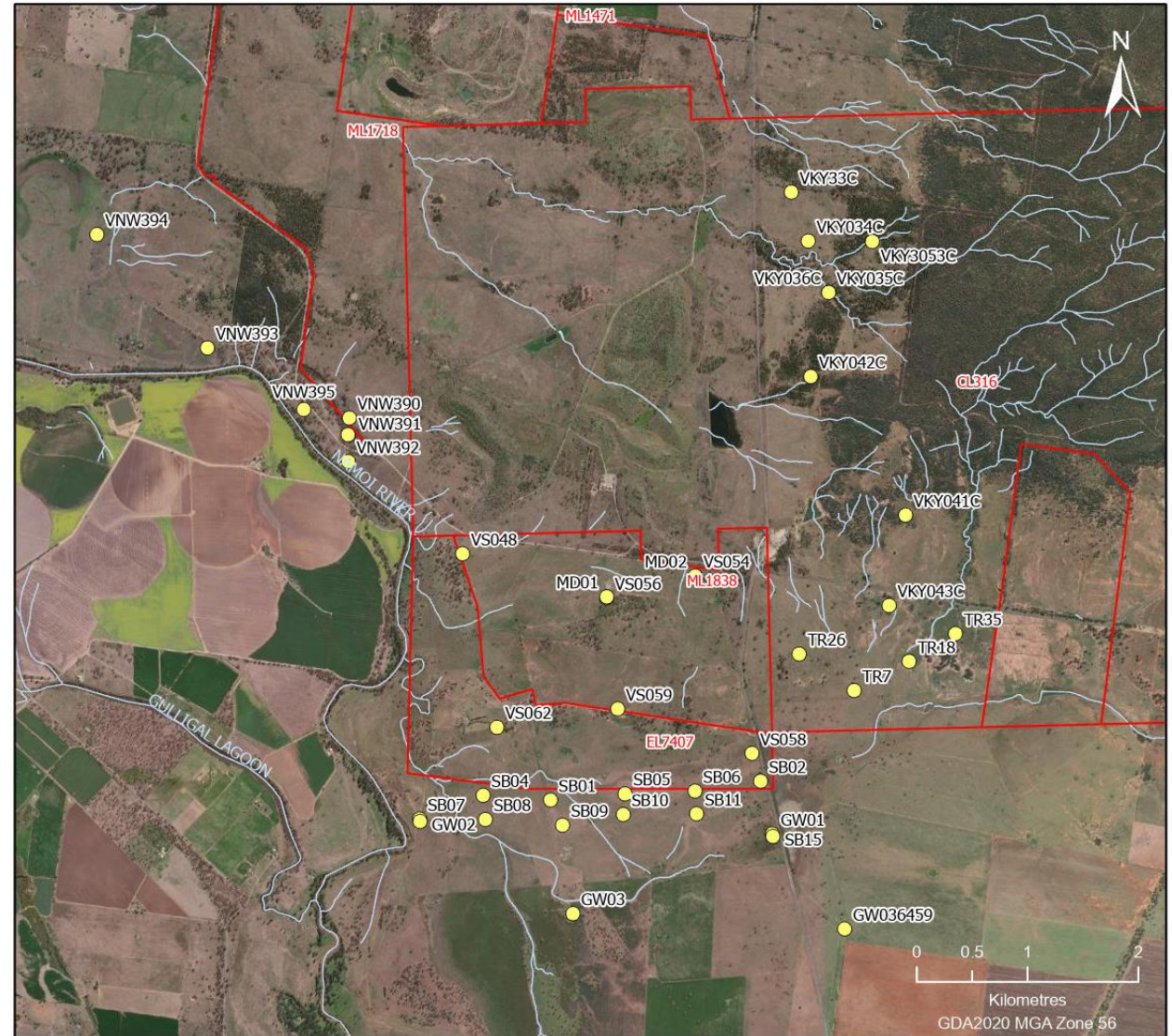
Dust emissions are not a result of the development.

- V2 results affected by insects and plant material accumulating in the gauge.
- Due to flooding DG2 was not accessible for November sampling.
- Data is for information purposes. Dust depositional gauge monitoring will be replaced by monitoring under the VEP Air Quality and Greenhouse Gas Management Plan



Vickery - Groundwater

- Groundwater levels at 31 standpipe locations were recorded in May 2023 and June 2023.
- Groundwater levels have increased since the last CCC meeting.



Vickery - Surface Water

- Water sampling undertaken in Driggle Draggie Creek and Namoi river on a couple of occasions since the last CCC meeting. Water pH and EC were within ANZG trigger values for ecosystems. TSS varied dependent on rain events.
- Results are for information purposes. Consolidation of monitoring with Vickery will occur as part of the Vickery Extension Project Water Management Plan.

	Jan	Feb	Mar	Apr	May	June
Monthly Rain (mm)	56	4.2	137	24.8	0	31.6
Cumulative Rain (mm)	56	60.2	141.2	222	222	253.6



Vickery – Q3 - Environmental

Q3 Summary:

Installation of environmental monitoring equipment:

- Weather station
- TEOMs
- Noise

Archaeological inspections

Ecological inspection pre-clearing



Complaints

No complaints received.

<https://whitehavencoal.com.au/our-business/our-assets/vickery-extension-project/>

Contacts

Vickery Extension Project

Contact us via email or our community hotline for more information, to provide feedback or to lodge a complaint.



1800 WHAVEN (1800 942 836)



VICKERYFEEDBACK@WHITEHAVENCOAL.COM.AU

ALL CONTACTS →

Approvals summary

- The Vickery Extension Project development consent (SSD 748) requires surrender of the former Vickery Coal Project (SSD 5000), and Canyon Coal Mine (DA 8-1-2005) consents. Both consents were surrendered on 27 April 2023.
- Water Management Plan is currently under assessment and Social Impact Management Plan progressing - DPE feedback.
- An Independent Environmental Audit was undertaken in June required by the VEP consent.
- Submission of the Annual Reviews occurred for Vickery and Canyon at the end of February 2023. They are available on the Whitehaven Coal Website.
- Approval of EMP's.

Management Plans/Strategies	Status
Environmental Management Strategy	Approved
Historic Heritage Management Plan	Approved
Blast Management Plan	Approved
Waste Management Plan	Approved
Aboriginal Cultural Heritage Management Plan	Approved
Bushfire Management Plan	Approved
Koala Plan of Management	Approved
Air Quality & Greenhouse Gas Management Plan	Approved
Noise Management Plan	Approved
Traffic Management Plan	Approved
Biodiversity Management Plan	Approved
Water Management Plan	Under assessment
Social Impact Management Plan	DPE feedback

Project Delivery

Vickery CCC Presentation

03 August 2023



WHITEHAVEN COAL

Key Update - Vickery

Update on Bulk Earthworks:

- Detailed Design for site Wide Bulk Earthworks for the Coal Handling and Processing Plant (CHPP) and Mine Infrastructure Area (MIA) completed.

Update on CHPP:

- Coal Preparation Plant is fully engineered.
- Completed Detailed Feasibility Study engineering for the materials handling system (crushing, conveyors, bins and transfers).

Update on MIA:

- Completed Detailed Feasibility Study engineering for the MIA.

Update on Rail:

- Completed Detailed Feasibility Study engineering for the Rail.

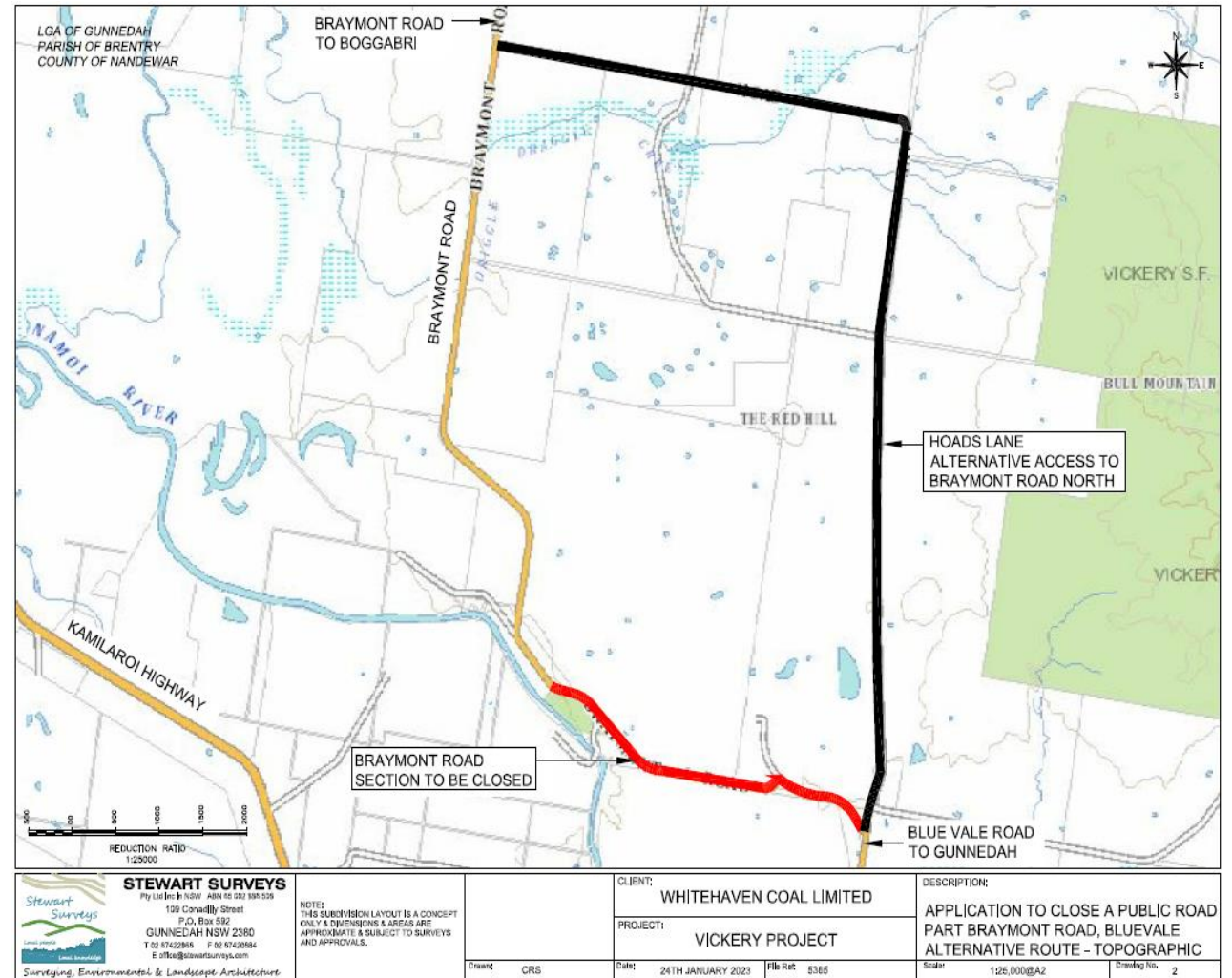
Key Update - Vickery

Approval Conditions:

- Commencement of development occurred on 28 April 2022.
- Commencement of construction occurred on 08 May 2023.
- Submission of application for Mining Lease along the rail alignment.
- Closure for a section of Braymont Rd has been supported by Gunnedah council as per the approved Environmental Impact Statement (EIS). Gunnedah Shire Council (GSC) have advertised the proposed closure per standard process, and if no submissions are received will be in a position to finalise the closure.
- Submission of Modification 1 which includes the following:
 - Disposal of tyres as per all other mines;
 - Extended haulage hours consistent with those proposed for the Tarrawonga Coal Mine;
 - Establishment of a batching plant and storage.

Onsite Activities:

- Geotechnical investigation ongoing.
- RAP salvage works completed.
- Removal of redundant electrical services completed.



Key Update - Vickery

Health, Safety, Environment and Community

Approvals:

- Application submitted from Environmental Protection License (EPL) variation for early mining activities.
- Application submitted for amended Water Management Plan and Rehabilitation Strategy for early mining activities.
- Statutory notifications for commencement of mining and mining operator have been completed and submitted to the regulator.
- Both milestone payments have been made to Gunnedah council in Nov 20 and May 23 (\$500k + \$500k).

Safety:

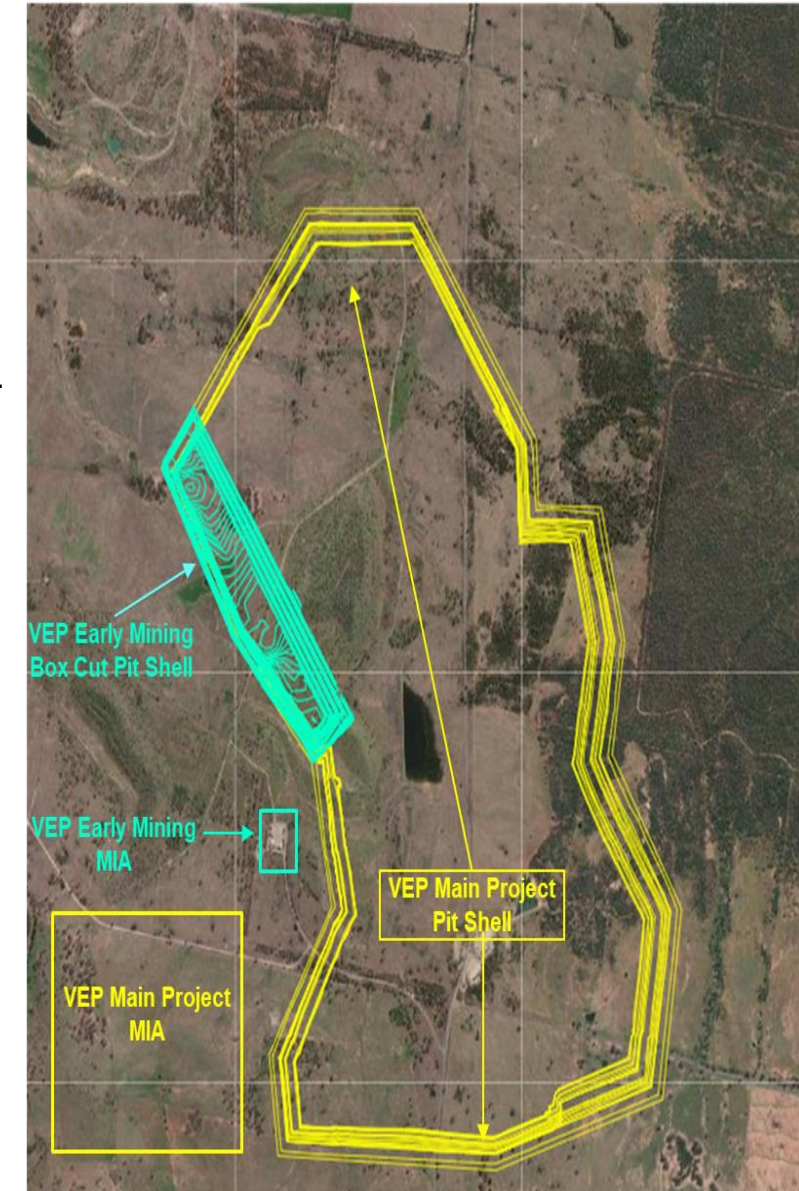
- No safety issues / incidents for this period (April to July 2023).

Environmental:

- No environmental complaints / issues / incidents for this period (April to July 2023).
- Environmental Monitoring Systems for early mining - Weather Station, Noise monitoring and Dust monitors is online.

Community:

- No complaints / issues / incidents for this period (April to July 2023).



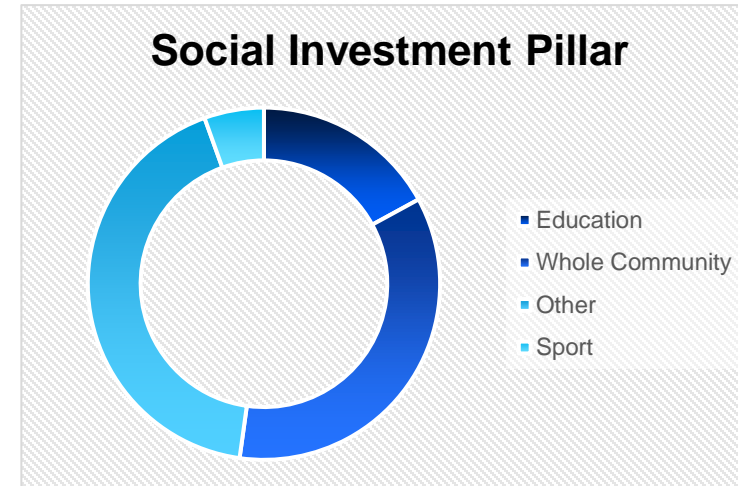
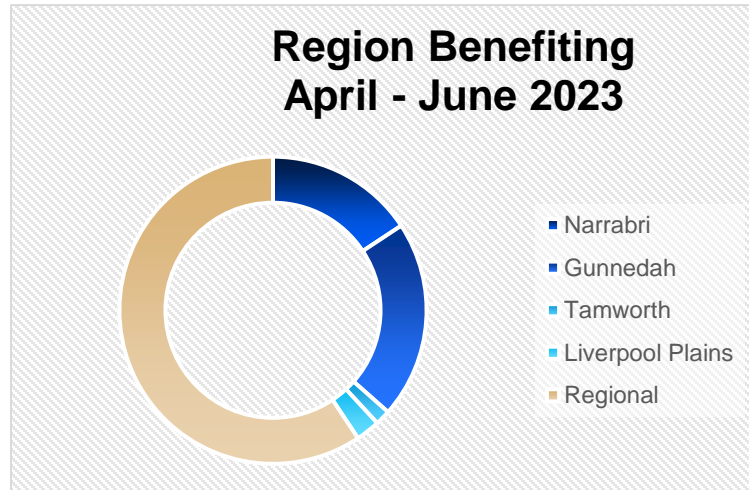
Key Update - Vickery

Construction:

- Undertaking an audit and compliance checks for local contractors is nearing completion, in line with the site familiarisation in anticipation of construction commencement in the coming weeks.
- There are a number of tenders out at the moment ranging from temporary offices, various support equipment and civil / earthworks. Approximate value around \$40M.
- Once final approval in place, work will start in the following areas:
 - Survey of site;
 - Sediment and erosion control;
 - Strip topsoil in Mining Infrastructure Area and Build Pad areas;
 - Cut and Fill MIA, Build Pad and Roads;
 - Gravel and Compact MIA, Build Pad and Roads.

Community

- Donations for April – June 2023 over \$385,378.63 spent in the local community.
- Some highlights – Narrabri community radio, Science and Engineering challenge, Walhallow School Health and Nutrition Program, Wee Waa Community Band, PCYC Gunnedah and Narrabri classes and outreach program, Boggabri Public School donation of Laptops and charging stations, Eulah Creek annual vintage machinery day and camp oven cook off, Lions Club of Werris Creek to purchase a BBQ van, Werris Creek swimming club with lane splitters, Narrabri Dolphins water polo club, Children's medical research Quirindi, Gunnedah Gala Dinner and Gunnedah High school.



Thank you

www.whitehavencoal.com.au



WHITEHAVEN COAL